

ISO 9001:2008 CERTIFIED

Application

The 8700 series gauges are used to measure water levels in all types of low-pressure, non-heated systems. Ideal for boats, recreational vehicles, campers, etc. NOTE: For hot or pressurized water service, see 8400 Series.



General Information & Features

The magnetic construction permits the complete sealing off of the inside liquid from the outside gauge head and dial allowing quick dial replacement without the loss of liquid or time.

The dial pointer is silicone-dampened. All dials, senders, and switches are instantly replaceable — there are just two screws to remove and replace.

The rugged gear drive is standard with shrouded, stainless steel, beveled gears designed to shed and work out any loose particles that might jam the gear action. All materials have been selected to provide outstanding durability in water-gauging applications.

Model #	Magnet	Available Dials
8741	Large Alnico	Direct-reading dial or TwinSite™ sender. Choice of 0-30, 0-90, 240-30 Ohms.
8781	Small Alnico	Direct-reading dial only.

Tank Depth in Inches	Distance From Float Bend to Float Rod Cut-off point
6	3"
7	3 3/4"
8	4 5/8"
9	5 5/8"
10	6 5/8"
11	7 5/8"
12	8 5/8"
13	9 3/4"
14	10 3/4"
15	11 3/4"
16	12 3/4"
17	13 3/4"
18	14 7/8"
19	15 7/8"
20	16 7/8"
21	17 7/8"
22	18 7/8"
23	20"
24	21"
25	22"
26	23"
27	24"
28	25 1/8"
29	26 1/8"
30	27 1/8"
31	28 1/8"
32	29 1/8"
33	30 1/4"
34	31 1/4"
35	32 1/4"
36	33 1/4"

Adjustable Liquid-Level Gauges

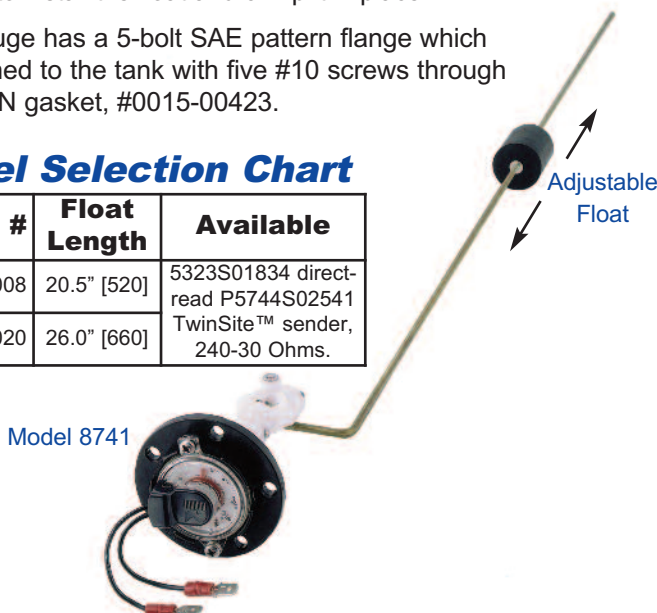
General Information & Features

These water gauges are designed for top mounting only. They are equipped with float arms which are to be cut off to the proper length for the tank into which they will be installed. Data sheet DS-337 furnishes the proper cut lengths and instructions on how to install the float and crimp it in place.

This gauge has a 5-bolt SAE pattern flange which is attached to the tank with five #10 screws through a Buna-N gasket, #0015-00423.

Model Selection Chart

Model #	Float Length	Available
8741-00008	20.5" [520]	5323S01834 direct-read P5744S02541 TwinSite™ sender, 240-30 Ohms.
8741-00020	26.0" [660]	



**Magnetic & Adjustable
Liquid-Level Gauges**

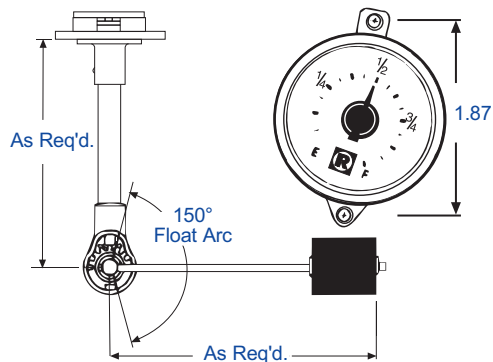
8700 Series

Magnetic Liquid-Level Gauges

[Metric]

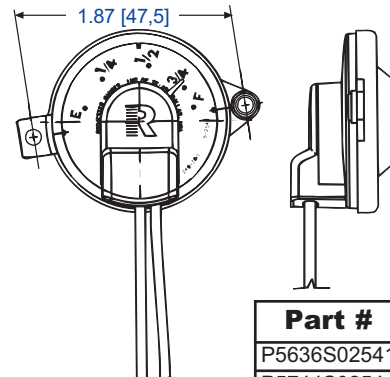
Magnetic Liquid-Level Gauges

Standard direct-reading gauge with 5323S01792 dial



Adjustable Liquid-Level Gauges

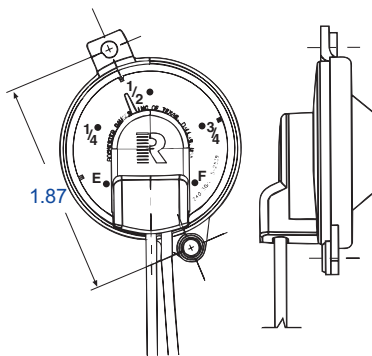
P5636S02541 TwinSite™ Dial, 240-30 ohms



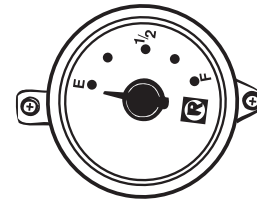
Part #	Description	Ohms
P5636S02541	Wire Leads	240-30
P5744S02541	.250 Male Tab	
P5872S02684	Wire Leads	0-90

Twinsite™ Dial, 0-30 ohms, 0-90 ohms & 240-30 ohms

Direct reading gauge with 5323S01834 dial



Part #	Description	Ohms
P5632S02539	Wire Leads	240-30
P5712S02539	.250 Male Tab	
P5807S02626	Wire Leads	0-90
P5764S02611	.250 Male Tab	0-30



General Specifications *

Mounting

Recommended for top mounting only.

Accuracy

Depends on proper sizing of gauge and tank configuration. Normally $\pm 5\%$ on direct reading and $\pm 7\%$ on TwinSite™ dial.

Temperature Range

Standard range is -40° to 149°F , -40 to 65C .

Shock

Suitable for mobile applications.

Vibration

Suitable for mobile applications.

Power

0.5 watts maximum for TwinSite™ versions.

Tank Pressure

0-10 psig [0 to 0, 68 Bar].

Approvals

UL recognized for marine water service.

Note: For installation instructions see DS-716 (data sheet).

Materials of Construction *

Head

Lightweight injection molded polyester SAE gasoline gauge flange ($2 \frac{1}{8}$ " [54] bolt circle for five #10 screws, screws not furnished).

Centershaft, Support, & Float Rod

Brass.

Gears, Cross Stud, & Bearings

Stainless steel.

Drive Magnet

Plated Alnico.

Gear Housing

Acetal.

Float

Nitrile rubber.

Gasket

Buna-N, UL recognized material.

Direct Reading Dial

Hermetically sealed polycarbonate.

TwinSite™ Dial

Polyamide.

Dial Screws

Plastite 0040-00479.

* Materials and specifications are subject to change without notice.

Pressure ratings subject to change due to temperature and other environmental considerations.

When ordering, specify:

1. Gauge model number.
2. Choice of dials.

01/29/10