



**ROCHESTER
GAUGES, INC.**

Industrial Fuel Level Senders

8340-07-08/
8343-07-08

ISO 9001:2008 CERTIFIED

Application

Metal or Plastic Fuel Tanks up to 40" Deep

These senders are used on heavy trucks, agricultural vehicles, construction equipment, etc. The 8340-08 Series fuel level sender has been qualified and proven in the most severe off-road service applications.

General Information & Features

Models 8340 (Top Mount) and 8343 (Side Mount) are available for use as variable-resistance or voltage divider senders in numerous resistance ranges. The most common resistive ranges are 0-90 and 240-30 ohms.

The heads on these senders are made of stainless steel or aluminum, both of which provides resistance to corrosion and a pleasant cosmetic appearance.

These senders employ laser trimmed, thick film resistance elements and are capable of generating accurate and reliable signals to remote receivers in all common resistance ranges.

- The contact carrier is isolated from the float arm cross shaft to reduce the effects of dither.
- Massive double-ended bearing design provides maximum support to the pivot arm/float arm sub-assembly in high vibration and high impact applications.
- Contact force against the ceramic card is closely controlled and unaffected by movement of the float arm due to slosh of fuel.
- Dual silver wiper contacts bridge the ground path and resistance pad circuit (others use coil springs, wire or a pivoting spring-loaded cross stud against the support arm).
- Materials have been carefully selected to minimize the galvanic voltage potential that exists between dissimilar metals thus reducing the potential for galvanic and electrolytic corrosion.

The nitrile rubber head gasket is available with these senders. Standard configuration with the lead hole at 12:00 has the float arm swing at 3:00. Float arm swings at 6:00, 9:00, and 12:00 are available if specified.

Special precautions are necessary on side-mounted models to avoid leakage around the mounting screws. Blind mounting screw holes in tank flange would completely eliminate this as a potential problem.



Industrial Fuel Level Senders

01/29/10

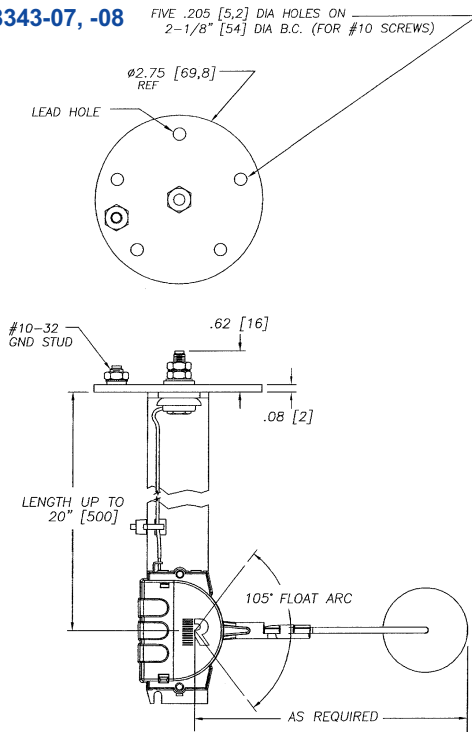
See reverse side for dimensional data, materials of construction, performance, and advice on how to order.

The Measure of Excellence

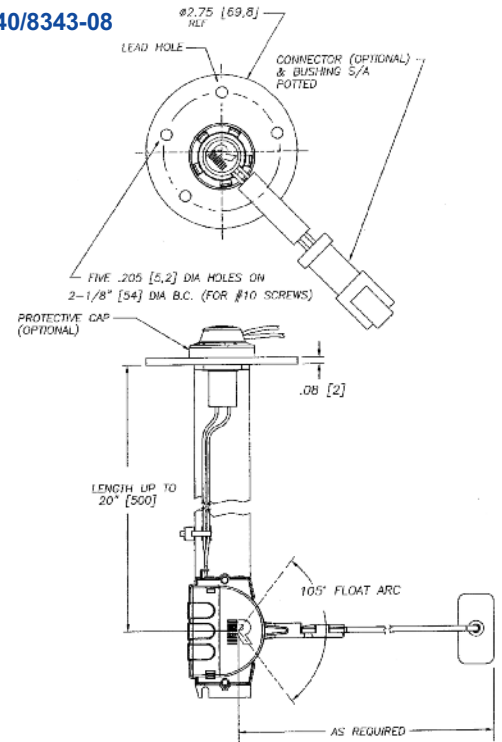
8340-07-08/8343-07-08

Industrial Fuel Level Senders

[METRIC] 8340/8343-07, -08



8340/8343-08



General Specifications*

Mounting

Top Mounting (8340 Series) Side Mounting (8343 Series)

Accuracy

Resistance Accuracy Empty -0/-3% F.S., Full +3%/-0% F.S. Accuracy depends on proper sizing of sender and tank configuration.

Temperature Range

Standard range, -40°C to 80°C diesel or gasoline.

Vibration

SAE, J1810.

Shock

SAE, J1810

Power**

0.5 watts maximum.

Air Leakage

SAE, J1810

Salt Spray

SAE, J1810

Fuel Compatibility

500 hours @ maximum rated temperature.

Hot Diesel Slosh Test

4,000,000 cycles.

Gasoline Rocker Test

1,500,000 cycles.

Dither

250,000 cycles.

Note: For installation instructions see DS-953 (data sheet)

** For more information refer to UL913.

Materials Of Construction*

Head: Suffix -08000;

Stainless steel;

Support: Suffix -08000;

Stainless steel.

Coil Housing and Head Insulator

Injection-molded thermoset plastic.

Terminal Stud, Nuts & Washers

Plated steel. (Sealed pass-thru wire optional)

Contact Spring

Plated beryllium copper.

Contact

Silver.

Float

Nitrile rubber.

Float Rod

Stainless steel.

* Materials and specifications are subject to change without notice.

Pressure ratings subject to change due to temperature and other environmental considerations.

When ordering, specify:

1. Furnish sender model number.
2. Specify tank depth and riser height, if any.
3. Specify relationship of float swing to lead hole. Swing through 3 o'clock position is standard.
4. Specify ohm range desired.
5. Furnish tank drawing if internal baffles or dip tubes are present.
6. Specify any extra cost options desired.
 - A. Pass-thru wire
 - B. Wiring harness with connector

01/29/10