



Application

The 6500 Series Senior™ gauges are designed for use in low pressure tanks 0-25 psig [0-1,7Bar] containing diesel fuel, gasoline, fuel oil and lubricating oils.

Used in many applications such as construction equipment, stationary generators, boats, farm equipment and home heating.

General Information & Features

The 6500 Series Senior™ gauges are available in gear-action models for top, centerline or angle mounting. In lever-action models centerline mounting is only available.

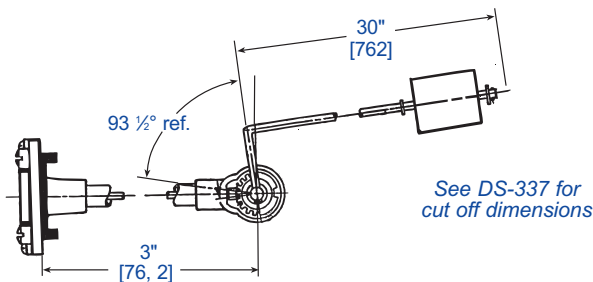
The standard float is nitrile rubber. Aluminum or stainless steel floats are available at extra cost. The gauge is mounted to a mating Senior™ flange 2 1/2" bolt circle [63,5mm] using four 1/4"-28 x 3/16" long screws. The gasket is Buna-N.



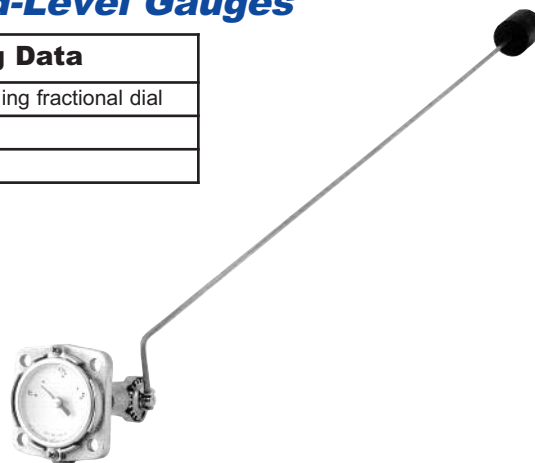
Model #	Action	Mounting	Dial, Sender or Switch Data
6540	Gear	Top	Senior™ TwinSite™ Sender in choice of 0-30, 0-90, or 240-30 Ohm ranges. #5002S00062 direct-reading dials may also be used.
6543		C/L or Angle	
L6543	Lever	C/L	
6550	Gear	Top	Standard switch #5023S00778 S.P.S.T., 150 VAC/50 VDC 1/2 Amp. Please furnish tank drawings and switch points so proper gauge and calibration can be supplied. Other switches available, see DS-364.
6553		C/L or Angle	
L6553	Lever	C/L	
6560	Gear	Top	#5025S00570 Senior™ side-reading fractional
6580		C/L or Angle	#5002S00062 Senior™ direct-reading fractional
6583		C/L or Angle	#5002S00547 Senior™ direct-reading fractional
L6583	Lever	C/L	#5002S00547 Senior™ direct-reading fractional
6583-00093	Gear	Top	#5002S00062 direct-reading fractional

Top Mounting Adjustable Liquid-Level Gauges

Model #	Mounting	Dial or Sending Data
6580-0151	Top	#5002S01379 Senior direct-reading fractional dial
6540-00090		#5816S02619P (0-90 Ohms)
6540-00240		#5648S02547P (240-30 Ohms)



See DS-337 for cut off dimensions

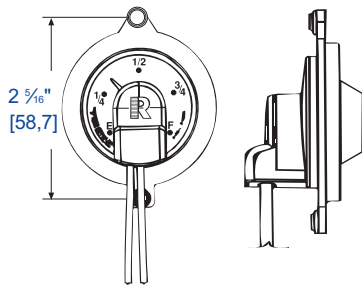


Adjustable 6540 or 6580 Top Mount Gauge

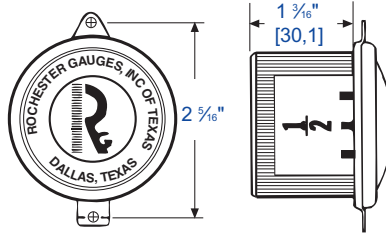
6500 Series

Magnetic Liquid-Level Gauges

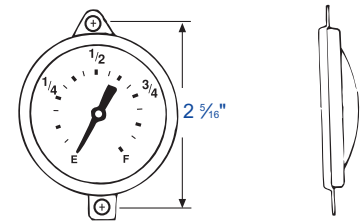
Sr. Twinsite Sender



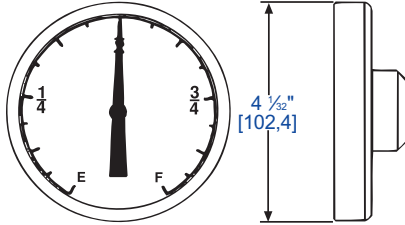
**# 5025S00570
Sr. Side-Reading Dial**



**# 5002S00062
Sr. Direct-Reading Dial**



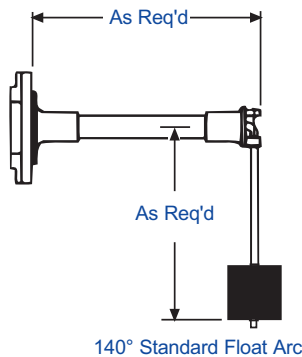
**# 5013S00456
Standard 4" Dial**



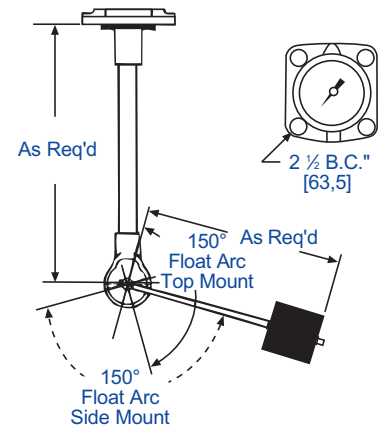
Note: This dial is used in conjunction with 93-2 mounting bracket and 39-2 bezel.

[METRIC]

Lever Action Gauge



Gear Action Gauge



General Specifications*

Accuracy

Accuracy depends on proper sizing of gauge and tank configuration. Normally, direct-reading dials are $\pm 3\%$; TwinSite™ senders are $\pm 7\%$. Vibration improves accuracy.

Temperature Range

-40F to +158°F, -40 to 70C

Humidity

Paint exposed portions of gauge, less dial, for marine applications.

Shock & Vibration

Suitable for mobile applications.

Power

0.5 watts maximum for TwinSite™ versions.

Tank Pressure

Up to 25 psig [1,7Bar]

Approvals

These direct indicating gauges are UL listed for flammable liquids. Some models UL recognized for marine service.

When ordering, specify:

1. Gauge model number.
2. Tank diameter and riser height.
3. Mounting location.
4. Ohm range on TwinSite™ versions.
5. Preferred switch on switch gauges, if other than standard.
6. Any listed options or preferences.

Materials of Construction*

Head

Die cast aluminum

Centershaft, Support Tube & Float Rod

Tempered aluminum

Gears, Cross Stud & Bearings

Stainless steel

Drive Magnet

Alnico

Gear Housing

Acetal plastic

Float

Nitrile rubber

Gasket

Buna-N, 0015-00004 or 0015-00079

Direct Reading Dial

Aluminum with acrylic crystal, hermetically sealed.

Side Reading Dial

Aluminum with polycarbonate crystal, hermetically sealed.

TwinSite™ Sender

Polyamide.

Screws

Zinc-plated steel 1/4"-28 x 9/16" long.

* Materials and specifications are subject to change without notice.

Pressure ratings subject to change due to temperature and other environmental considerations.